

**Academy of Economic Studies of Moldova  
American-Romanian Academy of Arts and Sciences  
COST Action CA16226: Smart Habitat for the Elderly  
COST Action CA19136: International Interdisciplinary Network on Smart  
Healthy Age-friendly Environments  
Association "Seniors AESM"**

**International TELECONFERENCE of young researchers  
"Creating the Society of Consciousness" (TELE-2022),  
11th Edition of 18-19 March 2022**

**with the Research Directorate:**

**"The friendly interaction of adults in the continuous intergenerational  
cooperation in the workplace until deep old age"**

**Program –Invitation  
(Annex no. 1)**

**The TELE-2022 international conference was a real international success.  
The main contributions to TELE-2022 and the main contributors of TELE-2022  
are:**

**I. American-Romanian Academy of Arts and Sciences (ARA)**

**1.1. Ruxandra VIDU**, university professor, PhD, ARA president: Active participant:

- a) Honorary President of the International Teleconference TELE-2022
- b) propagation of TELE-2022 at all stages of evolution of TELE-2022, member of the International Program Committee of TELE-2022
- c) active participation in the Opening and Closing of TELE-2022
- d) participation with communication in Plenary section I of TELE-2022
- e) supporting TELE-2022 with the publication of the main results, presented at TELE-2022, in "ARA Journal of Sciences", no. 5, 2022 (Editor in Chief of the Journal "ARA Journal of Sciences", no. 5, 2022)

**1.2. Elena NECHITA**, university professor, PhD, ARA correspondent member, vice-rector, "Vasile Alecsandri" University of Bacau, Romania: Active participant:

- a) propagation of TELE-2022 at all stages of evolution of TELE-2022, member of the International Organizing Committee and of the International Program Committee of TELE-2022
- b) active participation in the Opening and closing of TELE-2022
- c) monitoring the Plenary Section II of TELE-2022
- d) participation with 2 communications in the Plenary Section I and II a TELE-2022
- e) the support of TELE-2022 with the publication of the theses of the communications, presented at TELE-2022, in the Journal "Society Consciousness Computers", no. 8, 2022 (Editor in Chief of Journal "Society Consciousness Computers", no. 8, 2022)

**1.3. Marina COBAN**, associate professor, doctor, ARA correspondent member: Active participant:

a) propagation of TELE-2022 at all stages of evolution of TELE-2022, member of the International Organizing Committee of TELE-2022

b) participation with 2 communications in Sections of TELE-2022

c) monitoring Section no. 6. „Digital economic development” of TELE-2022

**1.4. Dumitru TODOROI**, university professor, doctor habilitat, ARA correspondent member:

Active participant:

a) President of TELE-2022

b) propagation of TELE-2022 at all stages of evolution of TELE-2022, President of the International Organizing Committee and President of the International Program Committee of TELE-2022

c) monitoring of the Opening, Closing and Plenary Section II sections of TELE-2022

d) participation with communication in Plenary section II of TELE-2022 and with 2 communications in sections TELE-2022

e) supporting TELE-2022 with the publication of theses of communications, presented at TELE-2022, in the Journal "Society Consciousness Computers", no. 8, 2022 (Honorary Editor of Journal "Society Consciousness Computers", no. 8, 2022)

f) supporting TELE-2022 with the publication of the main results, presented at TELE-2022, in "ARA Journal of Sciences", no. 5, 2022 (Editor in Chief of the Journal "ARA Journal of Sciences", no. 5, 2022)

## **II. COST Action CA16226: Smart Habitat for the Elderly**

**2.1. Francisco José MELERO MUNOZ**, CETEM, Spain: Active participant:

a) President of the COST Action CA16226: Smart habitat for the elderly

b) propagation of TELE-2022 at all stages of evolution of TELE-2022, member of the International Organizing Committee and of the International Program Committee of TELE-2022

c) active participation in the Opening and closure of TELE-2022

d) sponsorship of TELE-2022 with the publication of the theses of communications, presented at TELE-2022, in "Society Consciousness Computers" Magazine, no. 8, 2022

**2.2. Dumitru TODOROI**, university professor, doctor habilitat, correspondent member ARA: active participant:

a) President of TELE-2022

b) member of the MC of the COST Action CA16226: Intelligent habitat for the elderly

c) propagation of TELE-2022 at all stages of evolution of TELE-2022, President of the International Organizing Committee and President of the International Program Committee of TELE-2022

d) monitoring of the Opening Sections, closing and plenary section II of TELE-2022

e) participation with communication in plenary section II of TELE-2022 and with 2 communications in sections TELE-2022

f) publication of theses of communications, presented at TELE-2022, in the Journal "Society Consciousness Computers", no. 8, 2022 (Honorary Editor of Journal "Society Consciousness Computers", no. 8, 2022)

## **III. COST Action NET4Age-Friendly, COST CA19136: International interdisciplinary network on age-friendly smart environments**

**3.1. Carina DANTAS**, Shine2Europe, Portugal: Active participant:

- a) Chair COST Action NET4Age-Friendly, COST CA19136: International interdisciplinary network on age-friendly smart environments
- b) propagation of TELE-2022 at all stages of evolution of TELE-2022
- c) member of the International Organizing Committee and of the International Program Committee of TELE-2022

**3.2. Willeke van Staalduinen**, AFEdeemy CEO,

- a) Vice President and grant holder COST Action NET4Age-Friendly
- b) propagation of TELE-2022 at all stages of evolution of TELE-2022
- c) TELE-2022 sponsorship for 4 days of activities: Link: Join Zoom Meeting <https://us02web.zoom.us/j/8247911821?pwd=TDVNdmhmeWN2aDVmbTBCNnRIRHRqdz09>  
Meeting ID: 824 791 1821 Passcode: 191567
- c.1) First TELE-2022 rehearsal: 11.03.2022: 16:00-17:00
- c.2) Second TELE-2022 rehearsal: 17.03.2022: 16:00-17:00
- c.3) Two days of TELE-2022: 18.03.2022: 16:00-21:00 and 19.03.2022: 8:00-15:00

**3.3. Maddalena ILLARIO**, PhD, R&D, AOU Federico II, Department of Public Health Federico II Medical School, Italy

- a) leader of the WG and member of the MC of the COST NET4Age-Friendly Action, COST CA19136: Interdisciplinary International Network on Age-Friendly Smart Environments
- b) propagation of TELE-2022 at all stages of evolution of TELE-2022
- c) member of the International Organizing Committee and of the International Program Committee of TELE-2022
- d) active participation in the Opening and closing the TELE-2022
- e) moderator of the Plenary Section I of TELE-2022
- f) participation with communication in the Plenary Section I of TELE-2022

**3.4. Prof. Luiza SPIRU**, Ph.D, Dr., Foundation Ana Aslan International, Bucharest, Romania

- a) Leader of the WG and member of the MC of the COST NET4Age-Friendly Action, COST CA19136: The interdisciplinary international network on intelligent environments favorable to healthy age
- b) propagation of TELE-2022 at all stages of evolution of TELE-2022
- b) active participation in the Opening and closing of TELE-2022
- c) moderator of Section 2 "Digital solutions and large-scale sustainable deployment" of TELE-2022
- d) participation with communication in the Plenary Section I of TELE-2022

**3.5. Dumitru TODOROI**, university professor, doctor habilitat, ara correspondent member: Active participant:

- a) Co-Leader of the WG and member of the MC of the COST NET4Age-Friendly Action, COST CA19136: The interdisciplinary international network on intelligent environments favorable to healthy age
- b) President of TELE-2022
- c) the propagation of TELE-2022 at all stages of evolution of TELE-2022, President of the International Organizing Committee and President of the International Program Committee of TELE-2022

- d) moderator of the Opening, Closing and Plenary Section II sections of TELE-2022
- e) participation with communication in the Plenary Section II of TELE-2022 and with 2 communications in the TELE-2022 Sections
- f) publication of the theses of the communications, presented at TELE-2022, in the Journal "Society Consciousness Computers", no. 8, 2022 (Honorary Editor of Journal "Society Consciousness Computers", no. 8, 2022)
- g) supporting the TELE-2022 with the publication of the main results, presented at TELE-2022, in the "ARA Journal of Sciences" Magazine, no. 5, 2022 (Editor in Chief of the Journal "ARA Journal of Sciences", no. 5, 2022)

#### **IV. Investigative activities at TELE-2022.**

A total of 42 research results were planned to be included in the Program – Invitation with the aim of being communicated to TELE-2022. For the year 2022, the Association "Seniors of AESM" and the partners have proposed the following investigative activities with their presentation within TELE-2022:

- A1. Plenary Section I** (6 results of preventive investigations - communications to TELE-2022);
- A2. Section 1: *"Designing age-friendly intellectual and emotional environments and communities"*** (4 results of preventive investigations - communications at TELE-2022);
- A3. Section 2: *"Digital solutions and large-scale sustainable deployment"*** (6 results of preventive investigations - communications at TELE-2022);
- A4. Plenary Section II** (4 results of preventive investigations - communications to TELE-2022);
- A5. Section 3: *„Impact and sustainability of SHAFE: policy making, funding forecasts and cost-benefit assessments"*** (4 results of preventive investigations - communications to TELE-2022);
- A6. Section 4: *"Medical assistance, psychology and ergonomics of professional ecosystems of employees, associates and affiliates"*** (4 results of preventive investigations - communications at TELE-2022);
- A7. Section 5: *"Design and creation of innovative ICT solutions integrated in intelligent support for active ageing"*** (5 results of preventive investigations - communications at TELE-2022);
- A8. Section 6: *"Digital economic development"*** (9 results of preventive investigations - communications at TELE-2022).

#### **V. The composition of the participants in TELE-2022:**

Out of 42 results of the planned research, 38 results were communicated. The communications, which were not presented at TELE-2022, are motivated – the presenters were sick (Prof. Radu Mihalcea, USA and Prof. Ion IVAN, Romania) or were in activities, which did not allow the absence from unforeseen urgent activities (dr. Adrian PRISĂCARU, ASEM, RM and assoc. prof. dr. Tudor Ștefan LEAHU, ULIM, RM).

### **Participants by contestants and countries:**

**USA:** Planned participants: 4 Participants present: 3

**Romania:** Planned participants: 8 Participants present: 7

**Italy:** Planned participants: 5 Participants present: 5

**Greece:** Planned participants: 3 Participants present: 3

**Germany:** Planned participants: 1 Participants present: 1

**Republic of Moldova:** Planned participants: 44 Participants present: 42

Out of the total of 65 participants, planned with presentations at TELE-2022, were absent 4 presenters. All shortcomings are motivated.

### **VI. Specifics of TELE-2022 participants:**

**Men:** 32

**Women:** 33

**Adults:** 8

**Young people, up to 45 years old:** 50

### **VII. Publicity.**

#### **7.1. The results of the research, presented at TELE-2022:**

Theses of the communications at TELE-2022 were published: "Society Consciousness Computers" Magazine, Volume 8, March 2022 ISSN: 2359-7321 ISSN-L2359-7321

#### **7.2. The results of the research, presented at TELE-2022:**

Selected results from communications to TELE-2022: Out of 38 census results, communicated to TELE-2022, 22 results were selected. The authors are inspired to present the Extensio materials (6-8-10 pages) to be proposed for publication in the journal "ARA Journal of sciences", No. 5, 2022, California Davis, ARA Publishing House.

Typing requirements, structure of the work and other details:

<http://www.americanromanianacademy.org/41-submission>.

Deadline for submission of materials for publication: April 8, 2022.

On behalf of the International Organizing Committee of TELE-2022 and of the International Program Committee of TELE-2022,

**Dumitru TODOROI**, university professor, doctor habilitatum, ARA correspondent member,

Member of the Management Committees of COST CA16226 and COST CA19136,  
President of TELE-2022

**March 20, 2022**

## **Annex no. 1: TELE-2022: Program – invitation**

### **International TELECONFERENCE of young researchers**

#### **"Creating the Society of Consciousness" (TELE-2022),**

**11th Edition of 18-19 March 2022**

**with the Research Directorate: "The friendly interaction of adults in the continuous intergenerational cooperation in the workplace until deep old age"**

Older people "around the retirement period" in most cases want to continue their activities at work, where they have worked for a long time. That's what it's all about (1) persons employed in the labor force in the last 5-6 years before retirement (employees), (2) retired persons with continuous part-time activity at work (associates) and (3) persons retired without activity (affiliates). It makes sense to organize the continuity of the activities of these groups of adults at the "mother enterprise". It is also psychologically normal for adults to continue their activities by working together with young people in intergenerational communities. Such a community with the title: Association "Seniors of AESM" already activates for two years within the Academy of Economic Studies of Moldova (AESM).

For the year 2022, the Association "Seniors of AESM" and co-partners in Europe, in the research direction "Creating the Society of Consciousness", proposes the following investigative activities:

- (1) Designing age-friendly intellectual and emotional environments and communities;**
- (2) Digital solutions and large-scale sustainable deployment;**
- (3) Impact and sustainability of SHAFE: policy making, funding forecasts and cost-benefit assessments;**
- (4) Healthcare, psychology and ergonomics of the professional ecosystems of **employees, associates and affiliates**;**
- (5) Design and creation of innovative ICT solutions integrated into the smart support for active ageing, and**
- (6) Digital economic development.**

The first results of the researches from the proposed directions will be discussed in March 2022 within the international TELECONFERENCE of young researchers entitled "Creating the Society of Consciousness", (TELE-2022), 11th Edition, March 18-19, 2022. Will be grateful to all the members of the Working Groups WG1-WG5 of COST CA19136 to interact with us, the members of the Association "Seniors of EMSA" and European partners, in the research of the topics listed above.

**TELE-2022**  
**PROGRAM – INVITATION**

**Academy of Economic Studies of Moldova  
American-Romanian Academy of Arts and Sciences  
COST Action CA16226: Smart Habitat for the Elderly  
COST Action CA19136: International Interdisciplinary Network on Smart Healthy Age-  
friendly Environments**

**International TELECONFERENCE of young researchers  
"Creation of the Society of Consciousness" (TELE-2022), 11<sup>th</sup> edition,  
18-19 March 2022**

**Bacău-Boston-București-California University Davis-Chicago-Chișinău-Cluj Napoca-  
Coimbra, Portugal – Bloomington, USA - Gouda, Netherlands - Los Angeles - Iași – Scopje -  
Timișoara**

**[www.ase.md](http://www.ase.md), [www.AmericanRomanianAcademy.org](http://www.AmericanRomanianAcademy.org)**

**Honorary Presidents of the International TELECONFERENCE:  
Grigore BELOSTECINIC, Rector AESM, Prof. univ., dr. hab., Academician ASM, Honorary  
Member of ARA, Chisinau, Republic of Moldova  
Ruxandra VIDU, President ARA, Prof., PhD, California Davis, USA**

**President of the International TELECONFERENCE:  
Dumitru TODOROI, prof. univ., dr. hab., m.c. ARA, Chișinău, Republic of Moldova**

**Bacău-Boston-București-California University Davis-Chicago- Chișinău- Cluj Napoca -  
Coimbra, Portugal – Bloomington, USA - CETEM, Spain- Gouda, Netherlands - Los Angeles -  
Iași – Scopje - Timișoara**

**Chișinău 2022**

**International Program Committee:**

**Prof. Grigore BELOSTECINIC, Ph.D., Dr. hab., Acad. ASM, Chisinau, Moldova  
Prof. Ruxandra VIDU, Ph.D, ARA President, University of California Davis, USA  
Prof. Dumitru TODOROI, Ph.D, m.c. ARA, AESM, Chisinau, Moldova  
Prof. Radu MIHALCEA, Ph.D. Dr., Dr., DHC, Illinois State University, Chicago, USA  
Carina DANTAS, Shine2Europe, Portugal,  
Francisco José MELERO MUNOZ, CETEM, Spain,  
Prof. Ivan CHORBEV, PhD, dr., UNIV. UKIM, Scopje, North Macedonia  
Prof. Elena NECHITA, Ph.D., Dr.m.c. ARA, UB, Bacău, Romania  
MD Maddalena ILLARIO, PhD, R&D, AOU Federico II, Department of Public Health**



Federico II Medical School, Italy, 39-081-7464211  
 Prof. Margareta FLORESCU, Ph.D, Dr., Academy of Economic Studies, Bucharest, Romania  
 Assoc. Prof. Viorica SUDACEVSCHI, Dr., TUM, Chisinau, Moldova  
 Prof. Nadejda SISCAN, Ph.D., Dr. hab., m.c. ASM, Chisinau, Moldova  
 Dr. Carmen SABAU, ARA Emeritus Member, USA  
 Dr. Alin ZAMFIROIU, Academy of Economic Studies, Bucharest, Romania  
 Dr. Catalina CURCEANU, Researcher, Primo Ricercatore Laboratori Nazionali di Frascati dell'INFN, Frascati (Rome), Italy  
 Prof. Ion SMEUREAN, Ph.D, Dr., Academy of Economic Studies, Bucharest, Romania  
 Prof. Ion IVAN, Ph.D, Dr., Academy of Economic Studies, Bucharest, Romania  
 Prof. Dan CRISTEA, Ph.D, Dr., m.c. AR, UAIC, Iasi, Romania  
 Prof. Ioana IONEL, Ph.D, Dr. Ing. TPU, Timisoara, Romania  
 Prof. Costica SASU, Ph.D, Dr. UAIC, Iași, Romania  
 Prof. Sabin BURAGA, Ph.D, UAIC, Iași, Romania  
 Prof. Marian SIMION, Ph.D, BTI, Boston, USA,  
 Ass. Prof. Diana CRICLIVAIA, Ph.D. Dr., m.c. ARA, Ohio, USA  
 M. c. ARA Diana MICUSA, UFCM, Chisinau, Republic of Moldova  
 Nicoleta TODOROI, PhD, Music Academy "Gh. Dima", Cluj Napoca, Romania  
 Ass. Prof. Sergiu PERETEATCU, PhD, Dr., m.c. ARA, MSU, Chisinau, Moldova  
 Dr. Petre SERBAN, Germany  
 Prof. Dr. Ioan OPRIS, USA  
 Ass. Prof. Sergiu TUTUNARU, PhD, Dr., AESM, Chisinau,  
 Prof. Dr. Ing. Ruxandra BOTEZ, Ecole de technologie supérieure, Montréal, Canada  
 Prof. Dr. Ildiko PETER, Polytechnic University of Turin, Italy  
 Prof. Luiza SPIRU, Ph.D, Dr., Foundation Ana Aslan International, Bucharest, Romania  
 Prof. Dr. Stela DRAGULIN, Universitatea Brasov, Brasov, Romania  
 Ass. Prof. Valentina CAPATINA, PhD, Dr. AESM, Chisinau, Moldova,  
 Ass. Prof. Zinovia TOACĂ, PhD, Dr., TISE, ASEM, Chisinau, Moldova.

#### **Partners:**

Academy of Economic Studies of Moldova (AESM), Chișinău, Moldova  
 American-Romanian Academy of Arts and Sciences, California Davis, USA  
 AFEdemy, Gouda, Netherlands  
 SHINE 2Europe, Coimbra, Portugal  
 CETEM, Spain  
 Illinois State University (ISU), Chicago, USA  
 Faculty of Computer Science and Engineering from UKIM, Scopje, North Macedonia  
 Academy of Economic Studies, (ASE) Bucharest, Romania  
 Boston Theological Institute (BTI), Boston, USA  
 "Vasile Alecsandri" University at Bacau, (BU), Bacau, Romania  
 Federico II Medical School, Italy  
 Indiana University, Bloomington, Indiana, USA  
 "Al. Ioan Cuza" University at Iasi (UAIC), Iasi, Romania  
 Music Academy "Gh. Dima" at Cluj Napoca, Romania  
 Polytechnic University of Timisoara (TPU), Timisoara, Romania  
 State University of Moldova (MSU), Chișinău, Moldova  
 Foundation Ana Aslan International, Bucharest, Romania  
 Technical University of Moldova (TUM), Chișinău, Moldova  
 Free International University of Moldova (FIUM), Chișinău, Moldova



### **Topics:**

Section no.1. Designing age-friendly intellectual and emotional environments and communities;

Section no.2. Digital solutions and large-scale sustainable deployment;

Section no.3. Impact and sustainability of SHAFE (Smart Healthy Age-Friendly Environments): policy making, funding forecasts and cost-benefit assessments;

Section no.4. Healthcare, psychology and ergonomics of the professional ecosystems of employees, associates and affiliates;

Section no.5. Design and creation of innovative ICT solutions integrated into the smart support for active ageing;

Section no.6. Digital economic development.

### **Developments:**

1. Theme of communication, author(s), affiliation, e-mail: 25 January 2022

2. Summary of communication (one page, with pictures of authors): 4 February 2022

3. Confirmation of acceptance of communication: 11 February 2022

4. Presentation of the text of the full communication: 9 March 2022

5. TELECONFERENCE-2021: 18-19 March 2022

### **Deadline for submission of communications for publication:**

March 9, 2022 (up to 6 pages, with pictures of authors, text: TNR 12 in 2 columns) to email address: : infab\_dep@ase.md, todoroi@ase.md

Phone: 022 402 839, 022 402 893

### **Technology requirements, structure of the work and other details:**

<http://www.americanromanianacademy.org/41-submission>.

Party Days: Online, Zoom: 18-19 March 2022

Working language: Romanian and English (without translation).

Participation fee: not charged.

Accommodation and travel costs: are borne by participants

### **International Organizing Committee:**

Dumitru TODOROI, prof. univ., dr. hab., m.c. ARA, AESM, Chişinău, Moldova, President

Aureliu ZGUREANU, assoc. prof., PhD, dr., AESM, Chişinău, Moldova, Vice-president

Radu MIHALCEA, prof. univ., dr., dr., DHC, Illinois University, Chicago, USA

Carina DANTAS, Shine2Europe, Portugal

Francisco José MELERO MUNOZ, CETEM, Spain

Ivan CHORBEV, prof., PhD, Univ. UKIM, Scopje, North Macedonia

Elena NECHITA, prof., PhD, m.c. ARA, Univ. "Vasile Alecsandri", Bacău, Romania

Maddalena ILLARIO, PhD, Federico II Medical School, Italy

Alin ZAMFIROIU, ass. univ., dr., ASE Bucharest, Romania

Dan CRISTEA, prof. univ., dr., UAIC, m.c. AR, Iaşi, Romania

Ioana IONEL, prof., PhD, dr., hab, m.c ARA, TPU, Timisoara, Romania

Marian SIMION, prof., PhD, dr., Boston Theological Institute, Boston, USA

Tinca BELINSKI, MS Student, Indiana University, Bloomington, Indiana, USA

Constantin SASU, prof. univ., PhD, dr., UAIC, Iaşi, România

Zinovia TOACĂ, assoc. prof., PhD, dr., m.c. ARA, Dean, TISE, ASEM, Chişinău, Moldova

Marina COBAN, assoc. prof., PhD, dr., m.c. ARA, ASEM, Chişinău, Moldova  
Sergiu TUTUNARU, assoc. prof., PhD, dr., AESM, Chişinău, Moldova  
Viorica SUDACEVSCHI, assoc. prof., PhD, dr., UTM, Chişinău, Moldova  
Sergiu PERETEATCU, assoc. prof., PhD, dr., m.c. ARA, USM, Chişinău, Moldova  
Corina BULGAC, PhD, dr., ASEM, Chişinău, Moldova  
Nicoleta TODOROI, Drd, "Gh. Dima" Academy, Cluj-Napoca, Romania  
Dumitru MICUŞA, PhD Student, International Free University of Moldova  
Valentina CAPATINA, assoc. prof., PhD, dr., ASEM, Chişinău, Moldova  
Daniela POPA, assoc. prof., PhD, dr., ASEM, Chisinau, Moldova.

## Program

### Opening session of the

International TELECONFERENCE of young researchers "Creation of the Society of Consciousness" (TELE-2022), 11<sup>th</sup> edition, 18-19 March 2022, 16:00-16:15.

### Participants:

Grigore BELOSTECINIC, Prof. univ., dr. hab., Academician AŞM, Ruxandra VIDU, Prof. PhD, Dr. ARA President, Los Angeles, California, USA, Maddalena ILLARIO, PhD, Federico II Medical School, Italy, George I MIHALAS, Prof., PhD, Academician RAMS, Victor Babes University of Medicine and Pharmacy, Timisoara, Romania, Elena NECHITA, Prof., PhD, Univ. "Vasile Alecsandri", Bacău, Romania, Radu MIHALCEA, Prof. Dr. Dr. H. C., University of Illinois at Chicago, USA, Francisco José MELERO MUNOZ, CETEM, Spain, Prof. Luiza SPIRU, Ph.D, Dr., Foundation Ana Aslan International, Bucharest, Romania, Dumitru TODOROI, Prof., PhD, Dr. hab. m.c. ARA, ASEM, Chişinău, RM

### Section I: Plenary

March 18, 16:15 – 18:00

Moderators:

Maddalena ILLARIO, PhD, Federico II Medical School, Italy,  
George I MIHALAS, Prof., PhD, Academician RAMS, Victor Babes University of Medicine and Pharmacy, Timisoara, Romania  
Dumitru TODOROI, Prof., PhD, Dr. hab., m.c. ARA, ASEM, Chişinău, RM  
Secretary: Marina COBAN, Ass. Prof., PhD, Dr., m. c. ARA

1. Ruxandra VIDU, Prof., PhD, Dr., *Renewable energy: present and perspective*, ARA President, California, USA, [rvidu@undavis.edu](mailto:rvidu@undavis.edu)

2. George I MIHALAS, Prof., PhD, Academician, *Sonic Representation of Data. Medical Applications of Sonography*, Romanian Academy of Medical Sciences, Victor Babes University of Medicine and Pharmacy, Timisoara, Romania. email: [mihalas@gmail.com](mailto:mihalas@gmail.com)

3. Radu MIHALCEA, Prof. univ., dr. dr. DHC, *Probleme sociale si tehnice in dezvoltarea medicinei actuale, Subject reserved*, ISU, Chicago, USA, [radu2016mi@yahoo.com](mailto:radu2016mi@yahoo.com)

4. Elena NECHITA<sup>1</sup>, Prof. univ. dr., Elena-Roxana ARDELEANU<sup>2</sup>, Dr., *From Smart City to Smart Citizen. ICT Innovation for Improving Life in Contemporary Cities*, "Vasile Alecsandri" University of Bacău, Romania, <sup>1</sup>[enechita@ub.ro](mailto:enechita@ub.ro), <sup>2</sup>[rardeleanu@ub.ro](mailto:rardeleanu@ub.ro),

5. Madallena ILLARIO<sup>1</sup>, Lorenzo MERCURIO, Giovanni Tramontano<sup>1</sup>, Vincenzo De Luca<sup>2</sup>, Guido Iaccarino. <sup>1</sup>MD, PhD, *Process mapping to integrate an innovative tool in the prescription of adapted physical activity.* Department of Public Health, Federico II Medical School, Italy, 39-081-7464211, [illariomaddalena@gmail.com](mailto:illariomaddalena@gmail.com)

6. Cosmina PAUL<sup>1</sup>, Luiza SPIRU<sup>2</sup>, Prof., PhD, Dr., *The Development of Innovative Smart Solutions for Independent and Active Aging*, Ana Aslan International Foundation, <sup>1</sup>[cosmina.paul@anaaslanacademy.ro](mailto:cosmina.paul@anaaslanacademy.ro), <sup>2</sup>[lsaslan@anaaslanacademy.ro](mailto:lsaslan@anaaslanacademy.ro)

**Break, coffee, tea, snacks**  
March 18, 18:00 – 18:15

## **Section no. 1. Designing age-friendly intellectual and emotional environments and communities.**

March 18, 18:15 – 19:00

**Moderators:**

George I MIHALAS, Prof., PhD, Academician RAMS, Victor Babes University of Medicine and Pharmacy, Timisoara, Romania,

Corina BULGAC<sup>1</sup>, PhD, Dr., Vice Director ȘMEEB, ASEM

Secretary: Ana HÎNCU-CHILIANU, MS, ASEM

**41:** Mariana BUCIUCEANU-VRABIE, Ass. Prof., PhD, Dr. sociology, *Life long learning and digital inclusivity of older persons in Moldova*, Institutul Național de Cercetări Economice, Centrul Cercetări Demografice, [buciuceanuvrabie@gmail.com](mailto:buciuceanuvrabie@gmail.com)

7. Tinca BELINSCHI<sup>1</sup>, M.M., Indiana University, Indiana; B.M., Lynn University, Florida, Axel Gonzalo ROJAS VALLEJOS<sup>2</sup>, M.M., Rice University, Texas, M.M., Lynn University, Florida; B.M., Pontificia Universidad Catolica de Chile, *Strengthening Individuals' Connections to Society Through Innovative Musical Community Engagement Projects*, <sup>1</sup>[tinkabelinski@yahoo.com](mailto:tinkabelinski@yahoo.com) <sup>2</sup>[axelrojas@gmail.com](mailto:axelrojas@gmail.com)

8. Corina BULGAC<sup>1</sup>, PhD, Dr., Vice Director ȘMEEB, ASEM, Ana HÎNCU-CHILIANU<sup>2</sup>, MS, ASEM, *Importanța informării persoanelor în etate cu privire la facilitățile fiscale și creșterea gradului de conformarea benevolă a acestora*, <sup>1</sup>[bulgac.corina@ase.md](mailto:bulgac.corina@ase.md), <sup>2</sup>[anahincu96@gmail.com](mailto:anahincu96@gmail.com)

9. Corina BULGAC<sup>1</sup>, PhD, Dr., Vice Director ȘMEEB, ASEM, Mihail STRATULAT<sup>2</sup>, MS, ASEM, *Eficientizarea procedurilor de administrare fiscală – condiție indispensabilă în procesul de europenizare pentru Republica Moldova*, <sup>1</sup>[bulgac.corina@ase.md](mailto:bulgac.corina@ase.md), <sup>2</sup>[misha.stratulat@mail.ru](mailto:misha.stratulat@mail.ru)

## **Section 2. Digital solutions and large-scale sustainable deployment.**

18 March, 19:00 – 20:30

**Moderators:**

Prof. Luiza SPIRU, Ph.D, Dr., Foundation Ana Aslan International, Bucharest, Romania,

Francisco José MELERO MUNOZ, CETEM, Spain,  
Corina BULGAC, PhD, Dr., AESM, Chişinău, Republic of Moldova  
Secretary: Valentin BRICEAG<sup>2</sup>, PhD student, MSU, Chişinău, Republic of Moldova

10. Tudor BRAGARU<sup>1</sup>, Prof., PhD, Dr., Valentin BRICEAG<sup>2</sup>, PhD student, *Sustainable cybersecurity training for modern society*, <sup>1</sup>Moldova State University, Chisinau, Republic of Moldova, <sup>1</sup>[tbragaru@usm.md](mailto:tbragaru@usm.md), <sup>2</sup>[valentinbriceag@gmail.com](mailto:valentinbriceag@gmail.com)

11. Corina BULGAC<sup>1</sup>, PhD, Dr., Vice Director ŞMEEB, ASEM, Irina STRATULAT<sup>2</sup>, MD, ASEM, *Impactul situaţiei pandemice asupra comerţului internaţional în Republica Moldova*. <sup>1</sup>[bulgac.corina@ase.md](mailto:bulgac.corina@ase.md), <sup>2</sup>[dandarairina@mail.ru](mailto:dandarairina@mail.ru)

12. Corina BULGAC<sup>1</sup>, PhD, Dr., Vice Director ŞMEEB, ASEM, Adrian PLATON<sup>2</sup>, MD, ASEM, *Sistemul fiscal naţional - mediu de muncă care promovează stabilitatea în funcţia publică*, <sup>1</sup>[bulgac.corina@ase.md](mailto:bulgac.corina@ase.md), <sup>2</sup>[platon.adrian@ase.md](mailto:platon.adrian@ase.md)

13. Vasile NASTAS, PhD, Dr., ASEM, Moldova, Chisinau, *Entertainment Mobile Applications*, [vasilenastas.c@gmail.com](mailto:vasilenastas.c@gmail.com)

14. PLAMADEALA Olivia<sup>1</sup>, MORARU Maria<sup>2</sup>, *The EU digital age*, ASEM, <sup>1</sup>[plamadeala61@mail.ru](mailto:plamadeala61@mail.ru), <sup>2</sup>[moraru\\_maria@yahoo.com](mailto:moraru_maria@yahoo.com)

15. Cătălina CARAMAN<sup>1</sup>, BS Student ASEM, Chişinău, Adriana CATRUC<sup>2</sup>, lector universitar, ASEM, Chişinău, *Proiectarea şi gestionarea unei maşini autonome bazate pe Arduino*, <sup>1</sup>[caramancatalina@gmail.com](mailto:caramancatalina@gmail.com), <sup>2</sup>[catruc@ase.md](mailto:catruc@ase.md)

## Section II: Plenary

19 March, 8:00 – 9:30

Moderators:

Radu MIHALCEA, Prof. Dr. Dr. H. C., University of Illinois at Chicago, USA,  
Elena NECHITA, Prof., PhD, m.c. ARA, Univ. "Vasile Alecsandri", Bacău, Romania, Romania,

Aureliu ZGUREANU, Assoc. Prof., dr., AESM, Chişinău, Republic of Moldova  
Secretary: Corina BULGAC, PhD, Dr. AESM, Chişinău, Republic of Moldova

16. Ion IVAN<sup>1</sup>, Prof., PhD, Dr., Alin ZAMFIROIU<sup>2</sup>, PhD, Dr., *Digitalizarea şi avuţia naţională*, ASE, Bucureşti, România, <sup>1</sup>[ionivan.ion@gmail.com](mailto:ionivan.ion@gmail.com), <sup>2</sup>[alin.zamfiroiu@csie.ase.ro](mailto:alin.zamfiroiu@csie.ase.ro)

17. Dumitru TODOROI<sup>1</sup>, Prof., dr. hab., m. c. ARA, Elena NECHITA<sup>2</sup>, Prof., dr., m. c. ARA, *TIC: the friendly interaction of adults in the continuous intergenerational cooperation in the workplace until deep old age*. <sup>1</sup>Honorary Editor of "Society Consciousness Computers" Journal, ASEM, Chişinău, Republic of Moldova, **Editor in Chief** of "Society Consciousness Computers" Journal, "VasileAlecsandri" University of Bacău, România, <sup>1</sup>[todoroi@ase.md](mailto:todoroi@ase.md), <sup>2</sup>[enechita@ub.ro](mailto:enechita@ub.ro)

18. Maria KARYOTAKI<sup>1,2\*</sup>, Dr. Athanasios DRIGAS<sup>2</sup>, Prof. Charalabos SKIANIS<sup>1</sup>

*A Conversational Agent as a personal and professional development tool for healthy aging and sustainable living*, <sup>1</sup>University of the Aegean, Samos, Northern Aegean, Greece, <sup>2</sup>NCSR Demokritos, Agia Paraskevi, Athens, Greece, [\\*mkaryotaki@aegean.gr](mailto:*mkaryotaki@aegean.gr)

19. Andrian PRISĂCARU, PhD, Dr., *Rolul testării statice și dinamice în pregătirea profesională a studenților din domeniul TI*, ASEM, Chișinău, Republic of Moldova, [prisacaru.andrian.anatolie@ase.md](mailto:prisacaru.andrian.anatolie@ase.md)

**Break, coffee, tea, snacks**

**March 19, 9:30 – 9:45**

### **Section no.3. Impact and sustainability of SHAFE: policy making, funding forecasts and cost-benefit assessments.**

**March 19, 9:45 – 10:45**

**Moderators:**

Radu MIHALCEA, Prof. Dr. Dr. H. C., University of Illinois at Chicago, USA,

Tudor BRAGARU, Prof., PhD, Dr., MSU Chișinău, Republic of Moldova

Secretary: Dumitru MICUȘA, PhD Student, FIUM, Chișinău, Republic of Moldova

20. Dumitru MICUȘA, PhD Student, IFUM, Chișinău, Cornelia MICUȘA, DS, Cluj-Napoca, *Intergenerational solidarity. Intergenerational family solidarity*, [dimamicusha@gmail.com](mailto:dimamicusha@gmail.com)

21. Catalin BEDROS<sup>1</sup>, BS Student, Catalina CARAMAN<sup>2</sup>, BS Student, Constanța LOJECICO<sup>3</sup>, BS Student, Dumitru MICUȘA<sup>4</sup>, PhD Student, Ana-Maria PÂRLEA<sup>7</sup>, Arina SECRIER<sup>5</sup>, BS Student, Dumitru TODOROI<sup>6</sup>, Prof., dr. hab., m. c. ARA, *Crearea unei rețele de IMM în spațiul Dunărean pentru asigurarea bunăstării psihologice ecologice umane*.  
<sup>1,2,3,5,6</sup>ASEM, <sup>4</sup>FIUM, Chișinău, Republic of Moldova, <sup>1</sup>[bedros.catalin@ase.md](mailto:bedros.catalin@ase.md),  
<sup>2</sup>[caramancatalina@gmail.com](mailto:caramancatalina@gmail.com), <sup>3</sup>[constanta.lojecico1@gmail.com](mailto:constanta.lojecico1@gmail.com), <sup>4</sup>[dimamicusa@gmail.com](mailto:dimamicusa@gmail.com),  
<sup>5</sup>[arina.secrieri@gmail.ru](mailto:arina.secrieri@gmail.ru), <sup>6</sup>[todoroi@ase.md](mailto:todoroi@ase.md), <sup>7</sup>[pirlea.ana\\_maria@ase.md](mailto:pirlea.ana_maria@ase.md)

22. Olga TUMURUC<sup>1</sup>, MS, ASEM, Tudor BRAGARU<sup>2</sup>, Prof., PhD, Dr., *Strengthening the data-based decision-making process based on the National Interoperability Framework*, Chisinau, Republic of Moldova, <sup>1</sup>[olga.tumuruc@gmail.com](mailto:olga.tumuruc@gmail.com), <sup>2</sup>[tbragaru@usm.md](mailto:tbragaru@usm.md),

23. Dumitru IEȘEANU<sup>1</sup>, Computer science teacher, Tudor BRAGARU<sup>2</sup>, Prof., PhD, Dr., *SUSTAINABLE WIDE-SCALE IMPLEMENTATION OF E-LEARNING IN TECHNICAL VOCATIONAL EDUCATION*, <sup>1</sup>Vocational School No. 2, Cahul, Republic of Moldova, <sup>2</sup>Moldova State University, Chișinău, Republic of Moldova, <sup>1</sup>[dumitruieseanu77@gmail.com](mailto:dumitruieseanu77@gmail.com),  
<sup>2</sup>[tbragaru@usm.md](mailto:tbragaru@usm.md)

### **Section no. 4. Healthcare, psychology and ergonomics of the professional ecosystems of employees, associates and affiliates.**

**March 19, 10:45 – 11:45**

**Moderators:**

Cosmina PAUL, Ana Aslan International Foundation, Bucharest, Romania

Maria KARYOTAKI, University of the Aegean, Samos, Northern Aegean, Greece,

Secretary: Gheorghe BULGAC, BS student, MSU, Chișinău, Republic of Moldova

24. PADURI Anastasia<sup>1</sup>, ȚAPCOV Varvara<sup>2</sup>, *Wider Societal Effects of Birth Control*, Otto-von-Guericke University, Magdeburg, Germany, [nastyapaduri@gmail.com](mailto:nastyapaduri@gmail.com),  
[varvara.tapcov@gmail.com](mailto:varvara.tapcov@gmail.com)

25. Dumitru TODOROI<sup>1</sup>, Univ. prof., dr. hab., m. c. ARA, Gheorghe BULGAC<sup>2</sup>, BS student, *Employees, associates and affiliates with continuity of activities in AESM*, <sup>1</sup>AESM, Chișinău, <sup>2</sup>MSU, Chișinău, [todoroi@ase.md](mailto:todoroi@ase.md), [bulgac2000@gmail.com](mailto:bulgac2000@gmail.com)

26. Anatolie PRODAN<sup>1</sup>, BS Student, Vasile TACIC<sup>2</sup>, BS Student, Adriana CATRUC<sup>3</sup>, lector universitar, *Analiza funcționalităților dispozitivelor inteligente*, ASEM, Chișinău, [prodan.anatolie@ase.md](mailto:prodan.anatolie@ase.md), [tacic.vasile@ase.md](mailto:tacic.vasile@ase.md), [catruc@ase.md](mailto:catruc@ase.md)

27. CERNENCHI<sup>1</sup> Nadejda, BS Student, Scientific leader: POPA<sup>2</sup> Daniela, Ass. Prof., Dr., *Cyber Security Threat Analysis in Higher Education Institutions as a Result of Distance Learning*, ASEM, Chișinău, [cernenchi.nadejda@ase.md](mailto:cernenchi.nadejda@ase.md), [popa.daniela.Nc3E@ase.md](mailto:popa.daniela.Nc3E@ase.md)

## Section no. 5. Designing and creating innovative ICT solutions integrated into the intelligent support for active ageing.

March 19, 11:45 – 12:45

Moderators:

Aureliu ZGUREANU<sup>2</sup>, Ass. Prof., PhD., Dr., ASEM, Chișinău, Republic of Moldova

Tudor LEAHU, Ass. Prof., PhD, Dr., FIUM, Chișinău, Republic of Moldova

Secretary: Ion INCULEȚ, MD, ASEM, Chișinău, Republic of Moldova

28. Ion INCULEȚ<sup>1</sup>, MD, Aureliu ZGUREANU<sup>2</sup>, Conf. univ., Dr., ASEM, Sistem cu microcontrolere pentru eficientizarea lucrărilor într-o seră, ASEM, [inculet.ion@ase.md](mailto:inculet.ion@ase.md),  
[zgureanu.aureliu@ase.md](mailto:zgureanu.aureliu@ase.md)

29. Grigore FRANȚUZ<sup>1</sup>, MD, ASEM, Aureliu ZGUREANU<sup>2</sup>, Ass. Prof., PhD., Dr., ASEM, *Probleme de securitate a fluxului de informații într-o companie de asigurări*,  
[frantuz.grigore@ase.md](mailto:frantuz.grigore@ase.md), [zgureanu.aureliu@ase.md](mailto:zgureanu.aureliu@ase.md)

30. Roman POPA<sup>1</sup>, BS Student, ASEM, Aureliu ZGUREANU<sup>2</sup>, Ass. Prof., PhD., Dr., ASEM, *Capturing and distributing data changes using event driven streaming*, [popa.roman@ase.md](mailto:popa.roman@ase.md),  
[zgureanu.aureliu@ase.md](mailto:zgureanu.aureliu@ase.md)

31. Tudor LEAHU, Ass. Prof., PhD, Dr., *FONDUL IFORNMAȚIONAL UNITAR – FORMĂ PERFORMANTĂ DE SOLUȚIONARE DIGITALĂ A ORGANIZĂRII DATELOR PE MEDIUL SISTEMELOR INFORMATICE INTEGRATE*, Universitatea Liberă Internațională din Moldova, [leahu.ts@mail.ru](mailto:leahu.ts@mail.ru)

32. Adriana CATRUC, PhD student, *Smart home as a telemedicine tool for senior healthcare*, ASEM, Chișinău, [catrucadriana@gmail.com](mailto:catrucadriana@gmail.com)

Break, coffee, tea, snacks

March 19, 12:45 – 13:00



## Session no. 6. Digital economic development.

19 March, 13:00 – 15:00

Moderators:

Sergiu TUTUNARU, Ass. Prof., PhD, Dr., AESM, Chişinău, Republic of Moldova,

Marina COBAN, Ass. Prof., PhD, Dr., AESM, Chişinău, Republic of Moldova,

Secretary: Constanţa LOJECICO, BS Student, ASEM, Chişinău, Republic of Moldova

33. Denis CRAVŢOV<sup>1</sup>, PhD student, Tudor BRAGARU<sup>2</sup>, Prof., PhD, Dr., Mihail GÎRLEA<sup>3</sup>, Ass. Prof., PhD, *Digitization and sustainable growth in the quality of life*, <sup>1</sup>Moldova State University, Chisinau, Republic of Moldova, <sup>1</sup>[denis.krvc@mail.ru](mailto:denis.krvc@mail.ru), <sup>2</sup>[tbragaru@usm.md](mailto:tbragaru@usm.md), <sup>3</sup>[girleamih@mail.ru](mailto:girleamih@mail.ru)

34. Constanţa LOJECICO<sup>1</sup>, BS Student, Adriana CATRUC<sup>2</sup>, lector universitar, *Implementarea unui coş de cumpărături în Java script*, ASEM, Chişinău, <sup>1</sup>[constanta.lojecico1@gmail.com](mailto:constanta.lojecico1@gmail.com), <sup>2</sup>[catruc@ase.md](mailto:catruc@ase.md)

35. Tatiana DARIE<sup>1</sup>, BS Student, Marina COBAN<sup>2</sup>, Ass. Prof., PhD, Dr., *Impactul tehnologiilor digitale asupra învăţării*, ASEM, Chişinău, <sup>1</sup>[darie.tatiana@ase.md](mailto:darie.tatiana@ase.md), <sup>2</sup>[mcoban.mcoban@gmail.com](mailto:mcoban.mcoban@gmail.com)

36. Cătălina APRODU<sup>1</sup>, BS Student, Marina COBAN<sup>2</sup>, Ass. Prof., PhD, Dr., *Probleme de digitalizare a educaţiei în Republica Moldova*, ASEM, Chişinău, <sup>1</sup>[aprodu.catv@gmail.com](mailto:aprodu.catv@gmail.com), <sup>2</sup>[mcoban.mcoban@gmail.com](mailto:mcoban.mcoban@gmail.com)

37. Cătălin BEDROS<sup>1</sup>, BS Student, TUTUNARU<sup>2</sup> Sergiu, Ass. Prof., PhD, Dr., *Proiectarea unei baze de date „Depozite bancare” şi implementarea ei în SQLServer*, ASEM, Chişinău, <sup>1</sup>[bedros.catalin@ase.md](mailto:bedros.catalin@ase.md), <sup>2</sup>[tutunaru@ase.md](mailto:tutunaru@ase.md)

38. CRAVEŢCHI<sup>1</sup> Aurelia, BS Student, Conducător ştiinţific, POPA<sup>2</sup> Daniela, Ass. Prof., PhD, Dr., *Promovarea activităţilor academice pe pagina de Facebook prin intermediul reţelelor social media*, ASEM, Chişinău, <sup>1</sup>[cravetchi.aurelia@ase.md](mailto:cravetchi.aurelia@ase.md), <sup>2</sup>[popa.daniela.Nc3E@ase.md](mailto:popa.daniela.Nc3E@ase.md)

39. SECRIERI ARINA<sup>1</sup>, BS Student, TUTUNARU<sup>2</sup> Sergiu, Ass. Prof., PhD, Dr., *NATIONAL IMPLEMENTATION OF INFORMATIONAL TECHNOLOGIES IN TIPOGRAFIC INDUSTRY*, ASEM, Chişinău, <sup>1</sup>[arina.secrieri@gmail.ru](mailto:arina.secrieri@gmail.ru), <sup>2</sup>[tutunaru@ase.md](mailto:tutunaru@ase.md), <sup>1</sup>[arina.secrieri@gmail.ru](mailto:arina.secrieri@gmail.ru), <sup>2</sup>[tutunaru@ase.md](mailto:tutunaru@ase.md)

40. BADIUŢEANU<sup>1</sup> Mihaela, BS Student, TUTUNARU<sup>2</sup> Sergiu, Ass. Prof., PhD, Dr., *Implementing graphic design in social networks*, ASEM, Chişinău, <sup>1</sup>[badiuteanu.mihaela@ase.md](mailto:badiuteanu.mihaela@ase.md), <sup>2</sup>[tutunaru@ase.md](mailto:tutunaru@ase.md)

42. COLESNICOVA Vlada<sup>1</sup>, BS Student, Conducător ştiinţific: dr. TUTUNARU Sergiu<sup>2</sup>, Ass. Prof., PhD, Dr., *Some aspects of Software Applications for Incident Analysis*, <sup>1</sup>[colesnicova.vlada@ase.md](mailto:colesnicova.vlada@ase.md), <sup>2</sup>[tutunaru@ase.md](mailto:tutunaru@ase.md)



## **Conclusions, Suggestions, Decisions.**

**Closing of the international TELECONFERENCE of young researchers entitled "Creation of the Society of Consciousness", 11th Edition, March 18-19, 2022.**

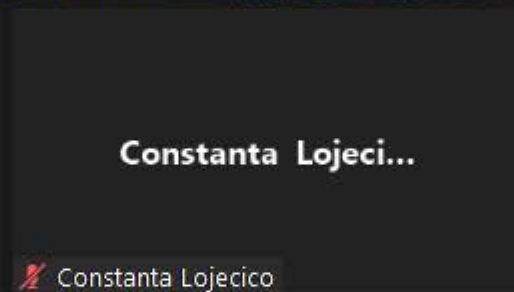
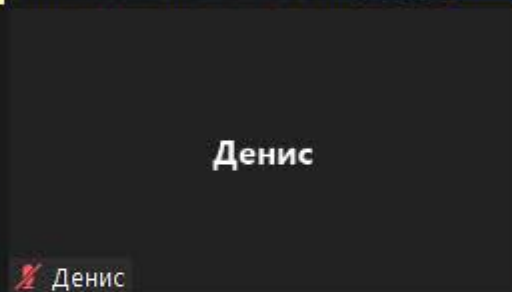
### **Participants:**

**Grigore BELOSTECINIC, Prof. univ., dr. hab., Academician AȘM, Ruxandra VIDU, Prof. PhD, Dr. ARA President, Los Angeles, California, USA, Maddalena ILLARIO, PhD, Federico II Medical School, Italy, George I MIHALAS, Prof., PhD, Academician RAMS, Victor Babes University of Medicine and Pharmacy, Timisoara, Romania, Elena NECHITA, Prof., PhD, Univ. "Vasile Alecsandri", Bacău, Romania, Radu MIHALCEA, Prof. Dr. Dr. H. C., University of Illinois at Chicago, USA, Francisco José MELERO MUNOZ, CETEM, Spain, Prof. Luiza SPIRU, Ph.D, Dr., Foundation Ana Aslan International, Bucharest, Romania, Dumitru TODOROI, Prof., PhD, Dr. hab. m.c. ARA, ASEM, Chișinău, RM**

### **Email addresses:**

**alin.zamfiroiu@csie.ase.ro,  
anahincu96@gmail.com,  
aprodu.caty@gmail.com,  
arina.secrieri@gmail.ru,  
axelrojas@gmail.com,  
badiuteanu.mihaela@ase.md,  
bedros.catalin@ase.md,  
bulgac.corina@ase.md,  
bulgac2000@gmail.com,  
caramancatalina@gmail.com,  
catruc@ase.md,  
cernenchi.nadejda@ase.md,  
colesnicova.vlada@ase.md  
constantina.lojecico1@gmail.com,  
cosmina.paul@anaaslanacademy.ro,  
cravetchi.aurelia@ase.md,  
dandarairina@mail.ru,  
darie.tatiana@ase.md,  
denis.krvc@mail.ru,  
dimamicusa@gmail.com,  
dumitruieseanu77@gmail.com,  
dumitrutodoroi1940@gmail.com,  
enechita@ub.ro,  
frantuz.grigore@ase.md,  
girleamih@mail.ru,  
illariomaddalena@gmail.com,  
inculet.ion@ase.md,  
ionivan.ion@gmail.com,  
lsaslan@anaaslanacademy.ro,**

leahu.ts@mail.ru,  
cosmina.paul@anaaslanacademy.ro,  
mcoban.mcoban@gmail.com,  
mihalas@gmail.com,  
misha.stratulat@mail.ru,  
mkaryotaki@aegean.gr,  
moraru.maria.stefan@ase.md,  
nastyapaduri@gmail.com,  
olga.tumuruc@gmail.com,  
pirlea.ana\_maria@ase.md,  
plamadeala61@mail.ru,  
platon.adrian@ase.md,  
popa.daniela.Nc3E@ase.md,  
popa.roman@ase.md,  
prisacaru.andrian.anatolie@ase.md,  
radu2016mi@yahoo.com,  
rardeleanu@ub.ro,  
rvidu@undavis.edu,  
tacic.vasile@ase.md,  
tbragaru@usm.md,  
tinkabelinski@yahoo.com,  
todoroi@ase.md,  
tutunaru@ase.md,  
valentinbriceag@gmail.com,  
varvara.tapcov@gmail.com,  
vasilenastas.c@gmail.com,  
zgureanu.aureliu@ase.md,  
[buciuceanuvrabie@ccd.ince.md](mailto:buciuceanuvrabie@ccd.ince.md)





162675 is currently host. Reclaiming host may disrupt breakout rooms, polls, and screen share

Reclaim Host

Stay Co-Host

✕



George Mihalas



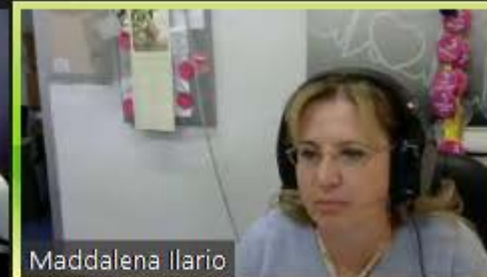
Wilhelmina Van Staalduinen



Tudor Bragaru



Dumitru Todoroi



Maddalena Ilario



Buciuceanu-Vrabie Mariana



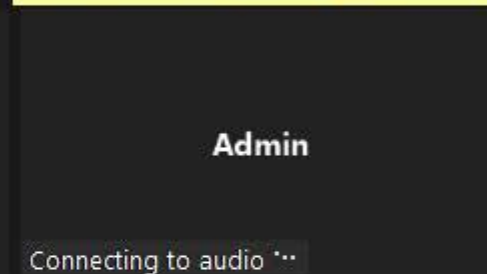
Ruxandra Vidu



162675



Seghei Tutunaru



Admin

Connecting to audio ...



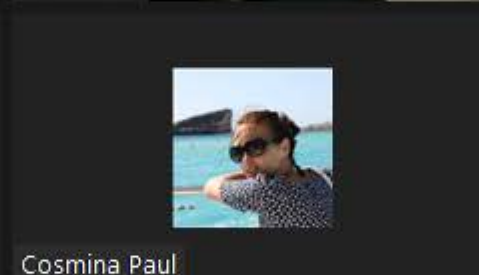
Aprodu Catalina

Aprodu Catalina

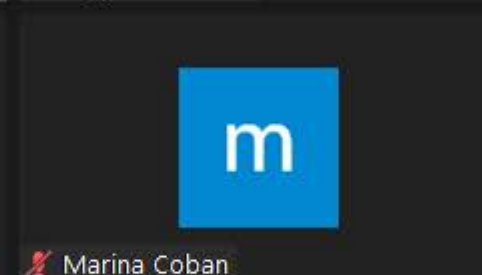


Tatiana Darie

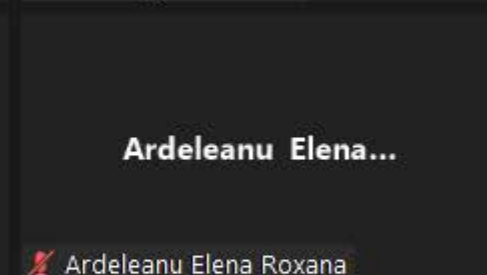
Tatiana Darie



Cosmina Paul

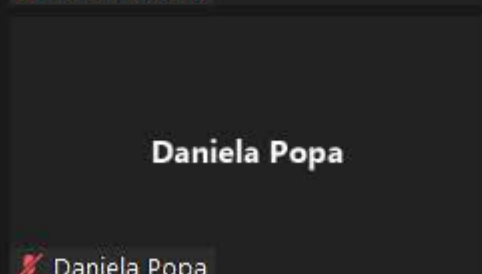


Marina Coban



Ardeleanu Elena...

Ardeleanu Elena Roxana



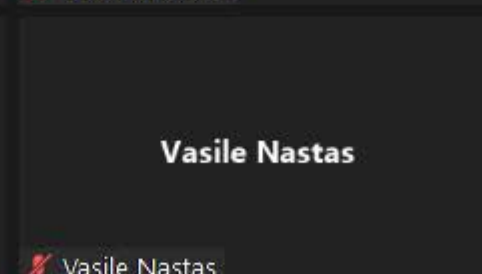
Daniela Popa

Daniela Popa



Moraru Maria

Moraru Maria



Vasile Nastas

Vasile Nastas

162675 is currently host. Reclaiming host may disrupt breakout rooms, polls, and screen share

Reclaim Host

Stay Co-Host

✕



George Mihalas



Wilhelmina Van Staalduinen



Tudor Bragaru



Dumitru Todoroi



Maddalena Ilario



Buciuceanu-Vrabie Mariana



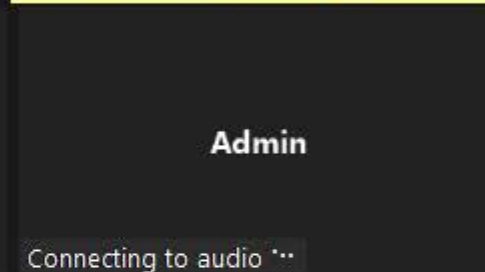
Ruxandra Vidu



162675



Seghei Tutunaru



Admin

Connecting to audio ...



Aprodu Catalina

Aprodu Catalina

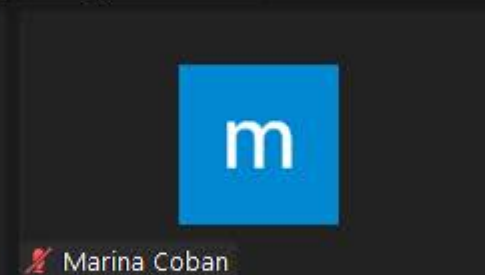


Tatiana Darie

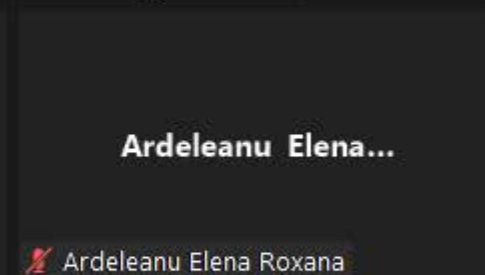
Tatiana Darie



Cosmina Paul

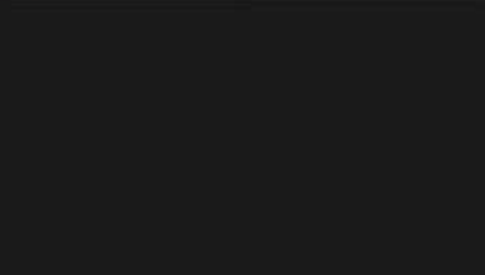


Marina Coban



Ardeleanu Elena...

Ardeleanu Elena Roxana



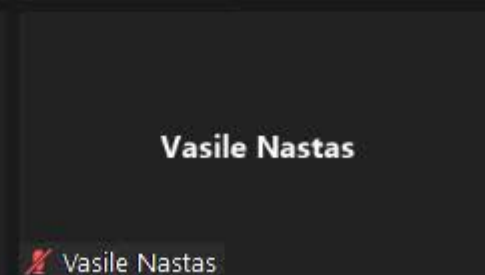
Daniela Popa

Daniela Popa



Moraru Maria

Moraru Maria



Vasile Nastas

Vasile Nastas



The development of innovative Smart  
Solutions for Independent and Active Ageing  
Cosmina Paul and Luiza Spiru  
Ana Aslan International Foundation, Bucharest

Click to add notes




Microsoft PowerPoint - 2022 Nano Tehnol Appic TELE 2022 Chisinau... 21 / 21 99%

# Va multumesc!

## Questions?

Contact info:  
**Ruxandra Vidu**  
[rvidu@ucdavis.edu](mailto:rvidu@ucdavis.edu)







Wilhelmina Van Staal...



Dumitru Todoroi



George Mihalas



Maddalena Ilario



Varvara Tapcov



Elena Nechita



View



Prof Dr Luiza Spiru



Unmute



Stop Video



Security



Participants



Polls



Chat



Share Screen



Record



Breakout Rooms



Reactions



Apps

Leave





## There is no «typical» older adult

- Pervasive negative ideas on older adults
- Stereotypes of dependent, frail, emarginated older adults

These negative attitudes limit freedom of older adults to live the lives they choose and block our capacity to capitalise on the great resources represented by older adults



Maddalena Ilario



Leave






A woman with blonde hair, wearing glasses and a headset, is seated at a desk. She is looking slightly to the left. The background shows an office setting with a whiteboard and some papers pinned to the wall. The name 'Maddalena Ilario' is visible in the bottom left corner of the video frame.

Microsoft PowerPoint - 2022 Nano Tehnol Applic TELE 2022 CHisinau... 4 / 21 99%

### UC Davis West Village: Componenta



- Village Square
- Mixed-Use (45,000 sf retail + apartment units above)
- Community College (60,000 sf)
- For-sale Faculty/Staff Housing (343 homes)
- Site for Day Care/Preschool
- Student Housing (1,980 beds)
- Water management & open space
- Recreation fields and parks





Yod-March 18-19 2022-Presentația TELE-2022 - PowerPoint (Сбой активации продукта)

Файл Главная Вставка Дизайн Переходы Анимация Слайд-шоу Рецензирование Вид Что вы хотите сделать? Общий доступ

Вставить Создать слайд Рядом

Буфер обмена Слайды

Шрифт

Масштаб

Рисование

Найти

Заменить

Выделить

Редактирование

1 March 18-19 2022

2 TELE-2022 Supporters

3 TELE-2022 Partners

4 Investigative activities at TELE-2022

5

6

## Investigative activities at TELE-2022

(Total: 42 research results will be communicated at TELE-2022)

For the year 2022, the Association "Seniors of AESM" and Partners proposes the following investigative activities :

**Plenary section I (6 communications)**

- (1) Designing age-friendly intellectual and emotional environments and communities (4 communications);
- (2) Digital solutions and large-scale sustainable deployment (6 communications);

**Plenary section II (4 communications)**

- (3) Impact and sustainability of SHAFE: policy making, funding forecasts and cost-benefit assessments (4 communications);
- (4) Healthcare, psychology and ergonomics of the professional ecosystems of employees, associates and affiliates (4 communications);
- (5) Design and creation of innovative ICT solutions integrated into the smart support for active ageing (5 communications), and
- (6) Digital economic development (9 communications).



Тод-March 18 -19 2022-Presentatia TELE-2022 - PowerPoint [Сбой активации продукта]

Файл Главная Вставка Дизайн Переходы Анимация Слайд-шоу Рецензирование Вид Что вы хотите сделать? Общий доступ

Вставить Создать слайд Сбросить Раздел

Буфер обмена Слайды

Шрифт Абзац Рисование

Найти Заменить Выделить Редактирование

1 March 18 -19 2022

2 TELE-2022 Supporters

3 **TELE-2022 Partners:**

4 Investigative activities at TELE-2022

5

6

## TELE-2022 Partners:

American-Romanian Academy of Arts and Sciences, California Davis, USA  
AFEdemy, Gouda, Netherlands  
SHINE 2Europe, Coimbra, Portugal  
CETEM, Spain  
Illinois State University (ISU), Chicago, USA  
Faculty of Computer Science and Engineering from UKIM, Scopje, North Macedonia  
Academy of Economic Studies, (ASE) Bucharest, Romania  
Boston Theological Institute (BTI), Boston, USA  
"Vasile Alecsandri" University at Bacau, (BU), Bacau, Romania  
Federico II Medical School, Italy  
Indiana University, Bloomington, Indiana, USA  
"Al. Ioan Cuza" University at Iasi (UAIC), Iasi, Romania  
Music Academy "Gh. Dima" at Cluj Napoca, Romania  
Polytechnic University of Timisoara (TPU), Timisoara, Romania  
State University of Moldova (MSU), Chisinau, Moldova  
Foundation Ana Aslan International, Bucharest, Romania  
Technical University of Moldova (TUM), Chisinau, Moldova  
Free International University of Moldova (FIUM), Chisinau, Moldova



Dumitru Todoroi